



SW1000

**SPACIOUS CUSTOM
RANCH HOME**

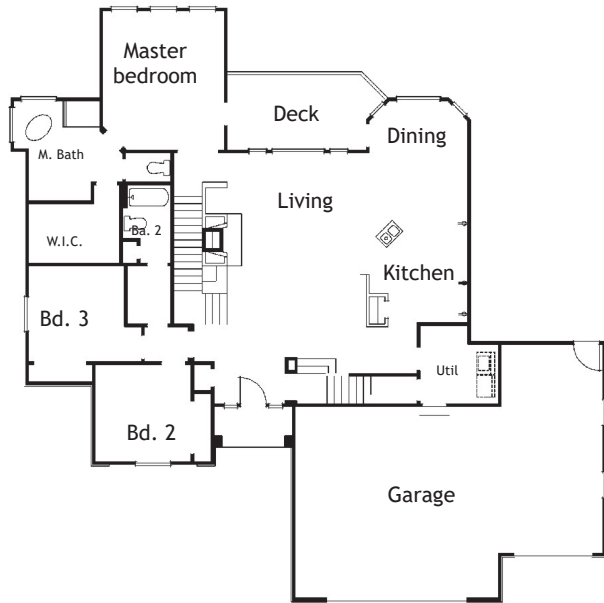


The SW1000 is a spacious custom ranch home offering these standard features:

- Four bedrooms
- Bonus room
- Three baths
- Three car garage
- Large walkout basement
- Pick your interior finishes

Now Building: This custom home as well as many others is now available at our new development, Britanie Ridge Estates. Britanie Ridge redefines rural living with large five-acre lots, paved roads, Front Range views, central water and all utilities to lots. See BritanieRidgeEstates.com for more information.



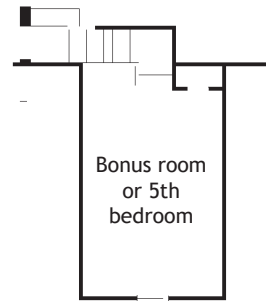


Main Floor Plan



Scan QR code for other SunWest Plans

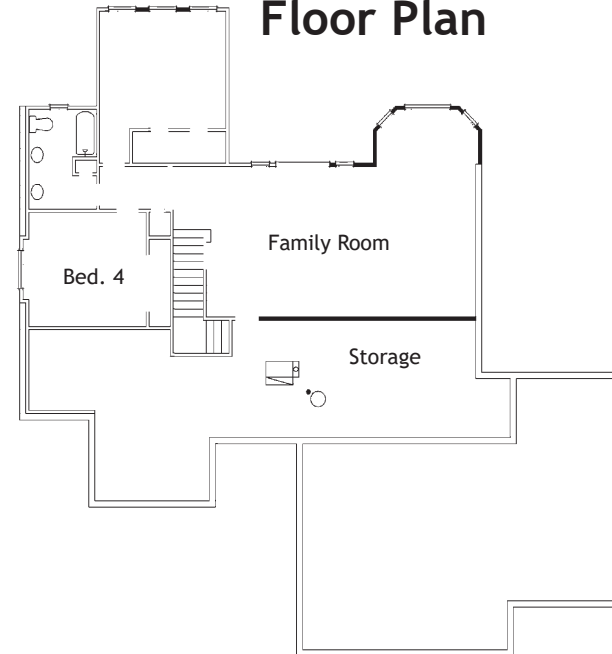
Bonus Room



Square Footage & Living Space	
Upper Sq. Ft.	
Main Sq. Ft.	<u>2,293</u>
Sq. Ft.	2,293
Basement Sq. Ft.	<u>1,966</u>
Total Sq. Ft.	4,259
Finished. Sq. Ft.	3,536

Please refer to MLS for specific square footage.

Basement Floor Plan



SunWest Homes
 Office 303.688.7533
 Email Info@SunWestCo.com
www.SunWestCo.com