



# SW1100

**SPACIOUS CUSTOMIZED  
RANCH HOME**



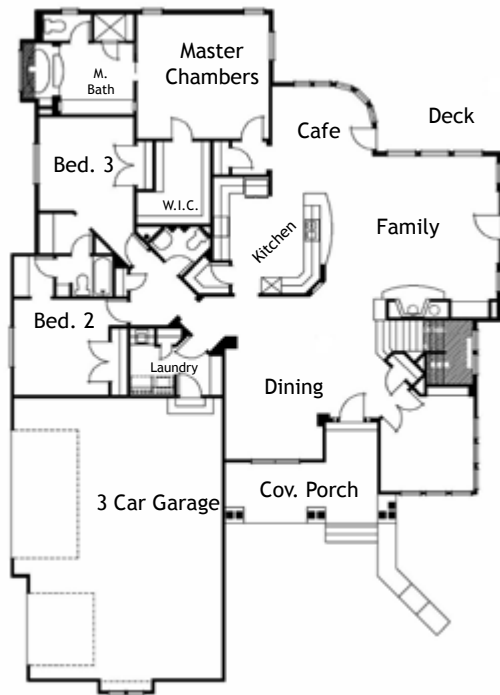
The SW1100 is a spacious custom ranch home offering these standard features:

- Three bedrooms
- Two and half baths
- Over 4361 finished square feet
- Large walkout basement
- Pick your interior finishes

**Now Building:** This custom home as well as many others is now available at our new development, Britanie Ridge Estates. Britanie Ridge redefines rural living with large five-acre lots, paved roads, Front Range views, central water and all utilities to lots. See [BritanieRidgeEstates.com](http://BritanieRidgeEstates.com) for more information.



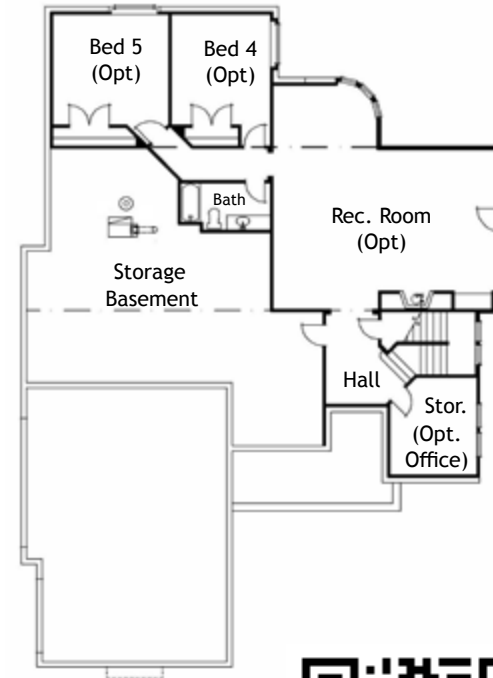
# Main Floor Plan



Square Footage & Living Space	
Upper Sq. Ft.	
Main Sq. Ft.	<u>2,714</u>
Sq. Ft.	2,714
Basement Sq. Ft.	<u>2,704</u>
Total Sq. Ft.	5,418
Finished. Sq. Ft.	4,361

Please refer to MLS for specific square footage.

# Basement Floor Plan



SunWest Homes  
 Office 303.688.7533  
 Email [Info@SunWestCo.com](mailto:Info@SunWestCo.com)  
[www.SunWestCo.com](http://www.SunWestCo.com)

Note: Basement finish is optional.

(Drawings not to scale.)



Scan QR code for other SunWest Plans