



SW1500

**SPACIOUS CUSTOMIZED
RANCH HOME**



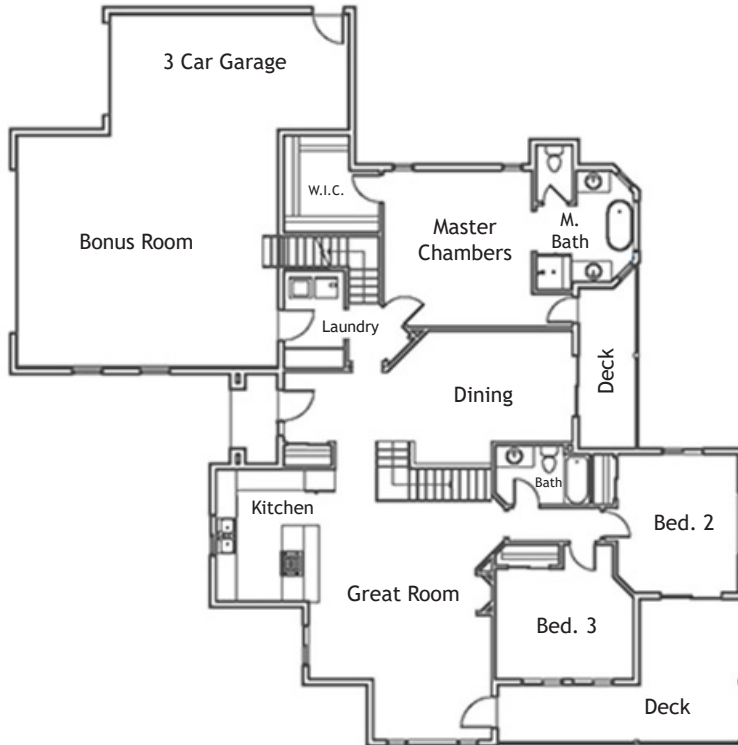
The SW1500 is a spacious custom ranch home offering these standard features:

- Three bedrooms
- Two baths
- 3,009 finished square feet
- Bonus room over garage
- Large walkout basement
- Pick your interior finishes

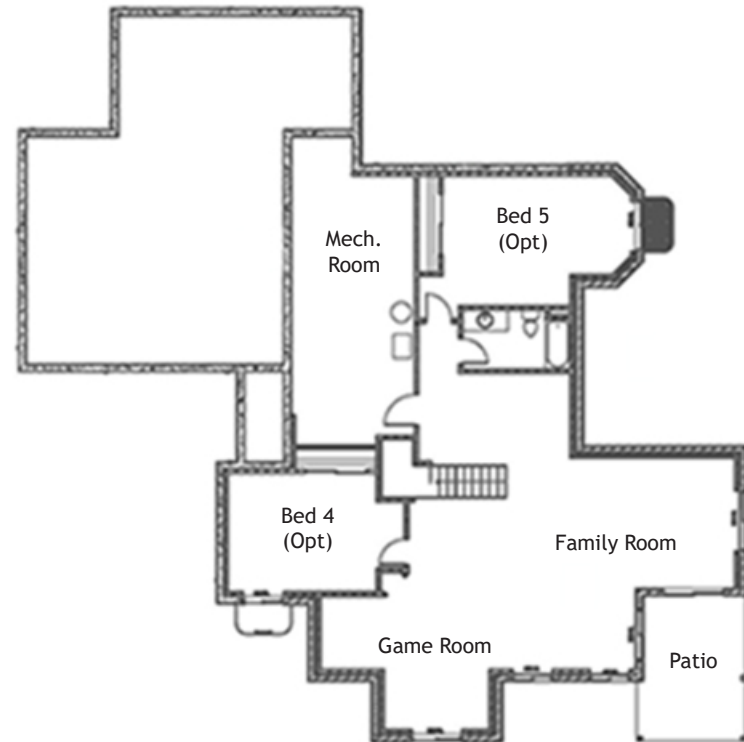
Now Building: This custom home as well as many others is now available at our new development, Britanie Ridge Estates. Britanie Ridge redefines rural living with large five-acre lots, paved roads, Front Range views, central water and all utilities to lots. See BritanieRidgeEstates.com for more information.



Main Floor Plan



Basement Floor Plan



Square Footage & Living Space	
Upper Sq. Ft.	317
Main Sq. Ft.	<u>2,036</u>
Sq. Ft.	2,353
Basement Sq. Ft.	<u>2,026</u>
Total Sq. Ft.	4,379
Finished Sq. Ft.	3,009
<small>Please refer to MLS for specific square footage.</small>	



SunWest Homes
 Office 303.688.7533
 Email Info@SunWestCo.com
www.SunWestCo.com

Note: Basement finish is optional.

(Drawings not to scale.)