



SW300

*SPACIOUS CUSTOM
RANCH HOME*



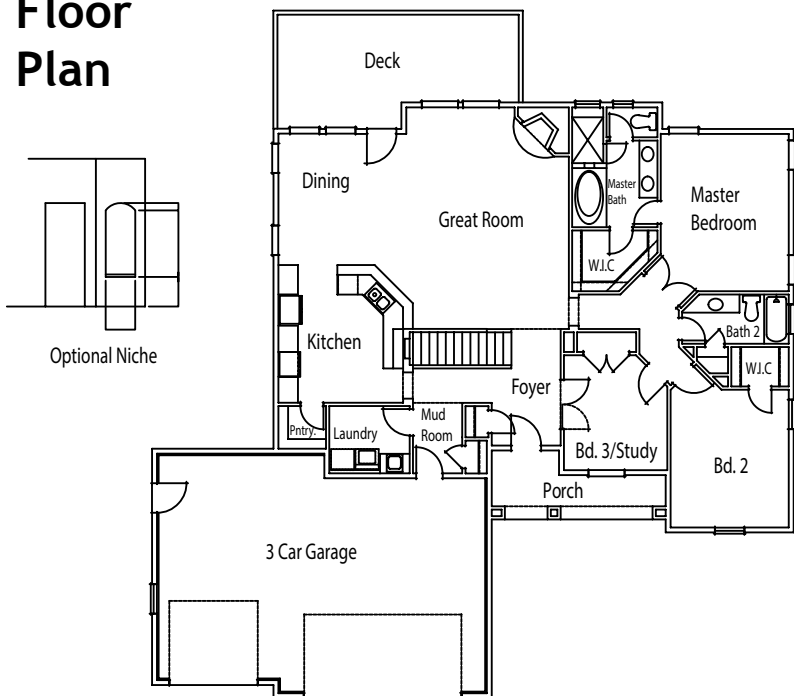
The SW300 is a spacious custom home offering these standard features:

- Three bedrooms
- Two baths
- Three car garage
- Large walkout basement
- Pick your interior finishes

Now Building: This custom home as well as many others is now available at our new development, Britanie Ridge Estates. Britanie Ridge redefines rural living with large five-acre lots, paved roads, Front Range views, central water and all utilities to lots. See BritanieRidgeEstates.com for more information.

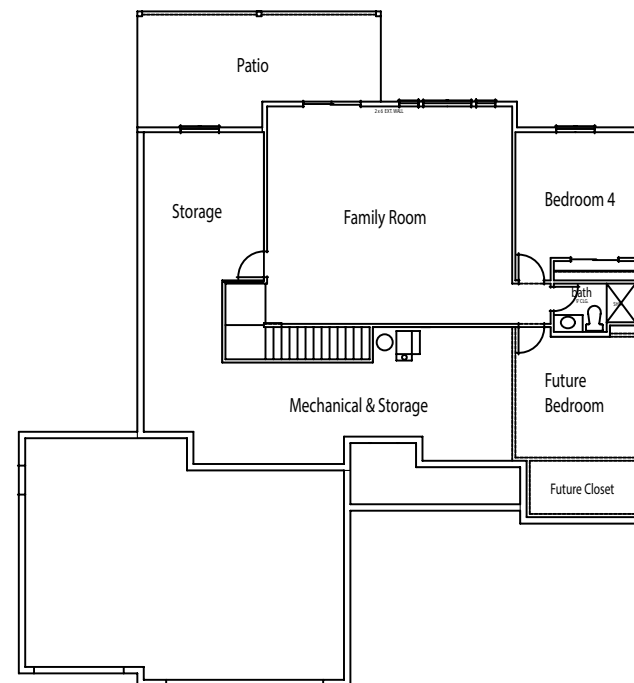


Main Floor Plan



Square Footage & Living Space	
Upper Sq. Ft.	
Main Sq. Ft.	1,981
Sq. Ft.	1,981
Basement Sq. Ft.	1,981
Total Sq. Ft.	3,962
Finished. Sq. Ft.	2,954

Please refer to MLS for specific square footage.



Basement Floor Plan

Note: Basement finish is optional.

(Drawings not to scale.)



Scan QR code for other SunWest Floor Plans



SunWest Homes
 Office 303.688.7533
 Email Info@SunWestCo.com
www.SunWestCo.com