

# SW403

*SPACIOUS CUSTOM  
RANCH HOME*



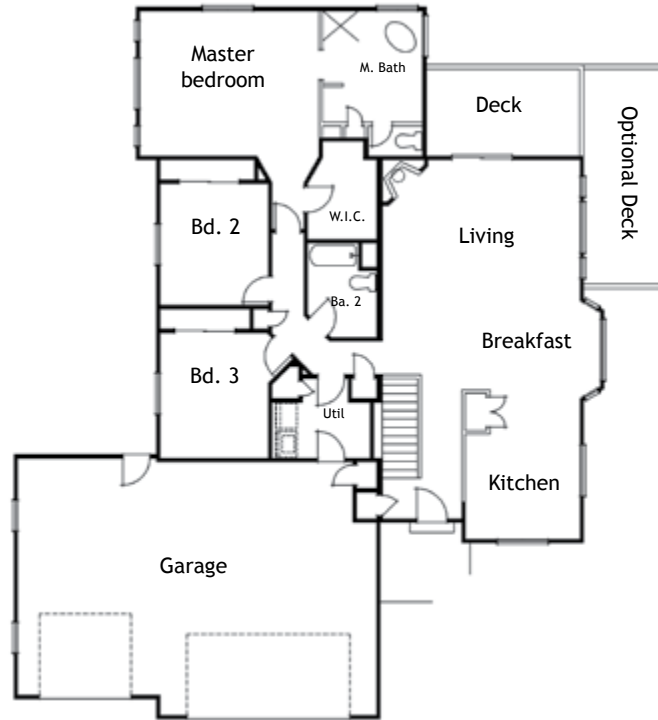
The SW403 is a spacious custom home offering these standard features:

- Three bedrooms
- Three baths
- Three car garage
- Large walkout basement
- Pick your interior finishes

**Now Building:** This custom home as well as many others is now available at our new development, Britanie Ridge Estates. Britanie Ridge redefines rural living with large five-acre lots, paved roads, Front Range views, central water and all utilities to lots. See [BritanieRidgeEstates.com](http://BritanieRidgeEstates.com) for more information.



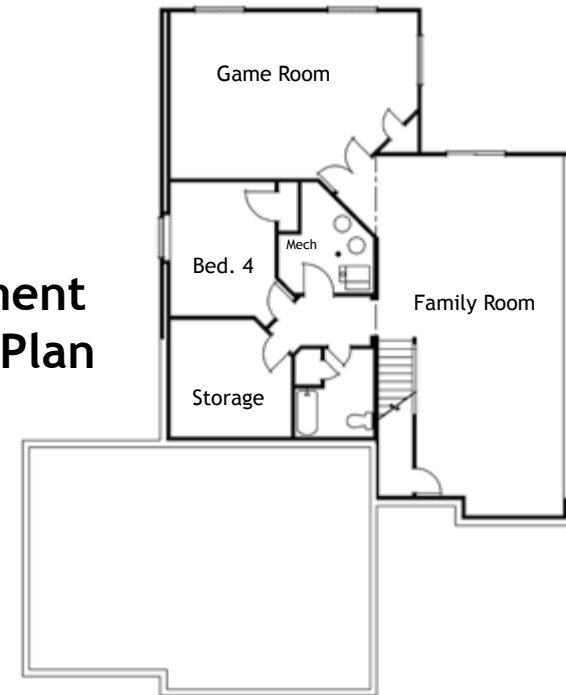
# Main Floor Plan



Square Footage & Living Space	
Upper Sq. Ft.	
Main Sq. Ft.	<u>1,851</u>
Sq. Ft.	1,851
Basement Sq. Ft.	<u>1,836</u>
Total Sq. Ft.	3,687
Finished. Sq. Ft.	3,382

Please refer to MLS for specific square footage.

# Basement Floor Plan



Note: Basement finish is optional.

(Drawings not to scale.)



Scan QR code for other SunWest Plans



SunWest Homes  
 Office 303.688.7533  
 Email [Info@SunWestCo.com](mailto:Info@SunWestCo.com)  
[www.SunWestCo.com](http://www.SunWestCo.com)