



SW600

*SPACIOUS CUSTOM
RANCH HOME*



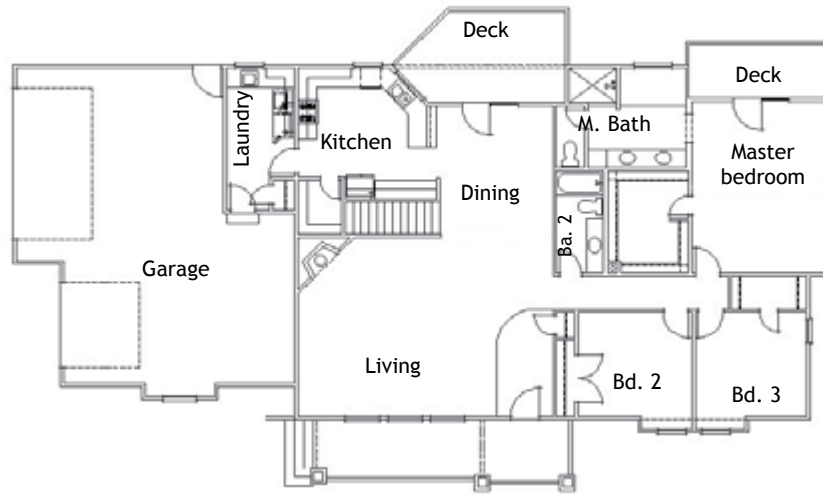
The SW600 is a spacious custom home offering these standard features:

- Three bedrooms
- Two baths
- Three car garage
- Large walkout basement
- Pick your interior finishes

Now Building: This custom home as well as many others is now available at our new development, Britanie Ridge Estates. Britanie Ridge redefines rural living with large five-acre lots, paved roads, Front Range views, central water and all utilities to lots. See BritanieRidgeEstates.com for more information.



Main Floor Plan

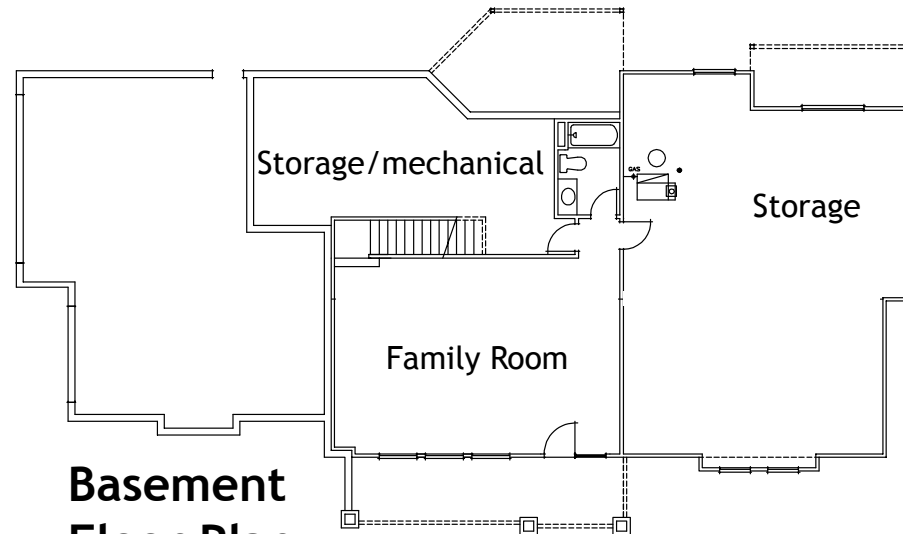


Square Footage & Living Space	
Upper Sq. Ft.	
Main Sq. Ft.	<u>2,113</u>
Sq. Ft.	2,113
Basement Sq. Ft.	<u>2,113</u>
Total Sq. Ft.	4,226
Finished. Sq. Ft.	2,768

Please refer to MLS for specific square footage.



Scan QR code for other SunWest Plans



Basement Floor Plan

Note: Basement finish is optional.

(Drawings not to scale.)



SunWest Homes
 Office 303.688.7533
 Email Info@SunWestCo.com
www.SunWestCo.com