



SW900

**SPACIOUS CUSTOM
RANCH HOME**



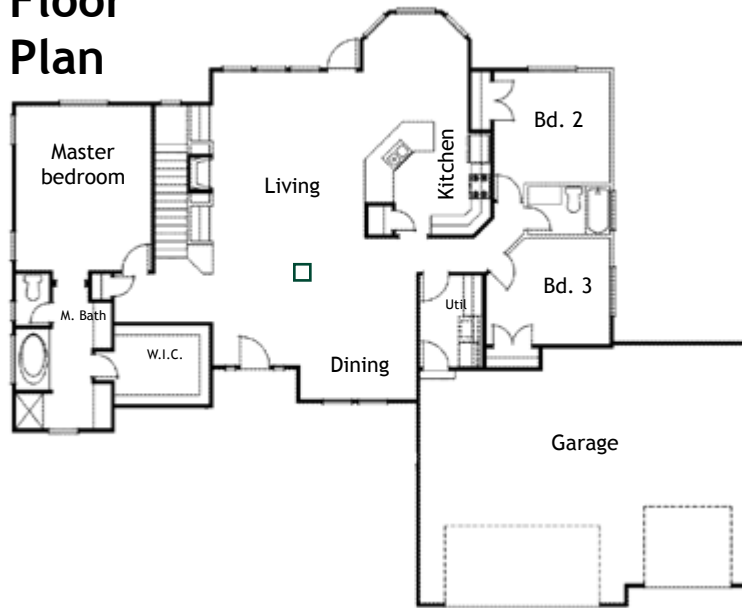
The SW900 is a spacious customized home offering these standard features:

- Three bedrooms
- Three baths
- Three car garage
- Large walkout basement
- Pick your interior finishes

Now Building: This custom home as well as many others is now available at our new development, Britanie Ridge Estates. Britanie Ridge redefines rural living with large five-acre lots, paved roads, Front Range views, central water and all utilities to lots. See BritanieRidgeEstates.com for more information.



Main Floor Plan

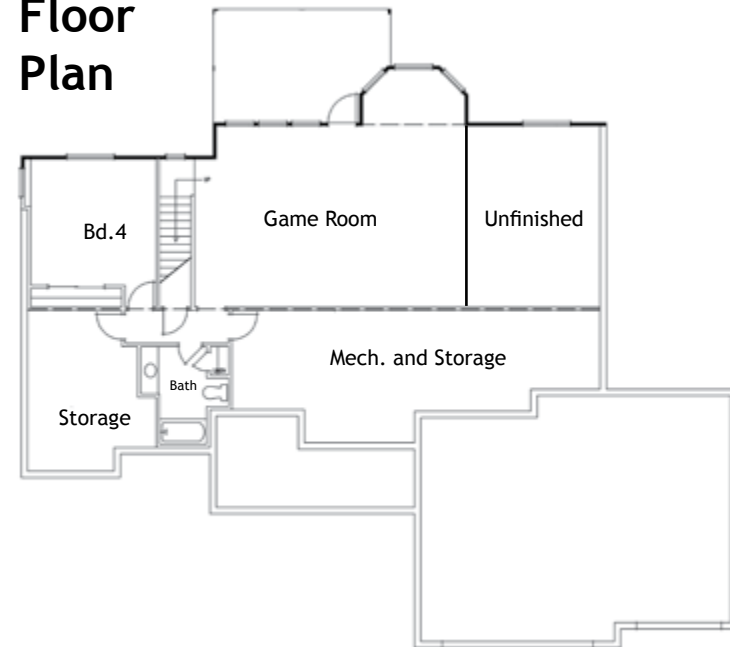


Scan QR code for other SunWest Plans

Square Footage & Living Space	
Upper Sq. Ft.	
Main Sq. Ft.	<u>2,000</u>
Sq. Ft.	2,000
Basement Sq. Ft.	<u>2,000</u>
Total Sq. Ft.	4,000
Finished. Sq. Ft.	3,168

Please refer to MLS for specific square footage.

Basement Floor Plan



Note: Basement finish is optional. Basement square footage calculated with optional finished game room and bath.

(Drawings not to scale.)



SunWest Homes
 Office 303.688.7533
 Email Info@SunWestCo.com
www.SunWestCo.com